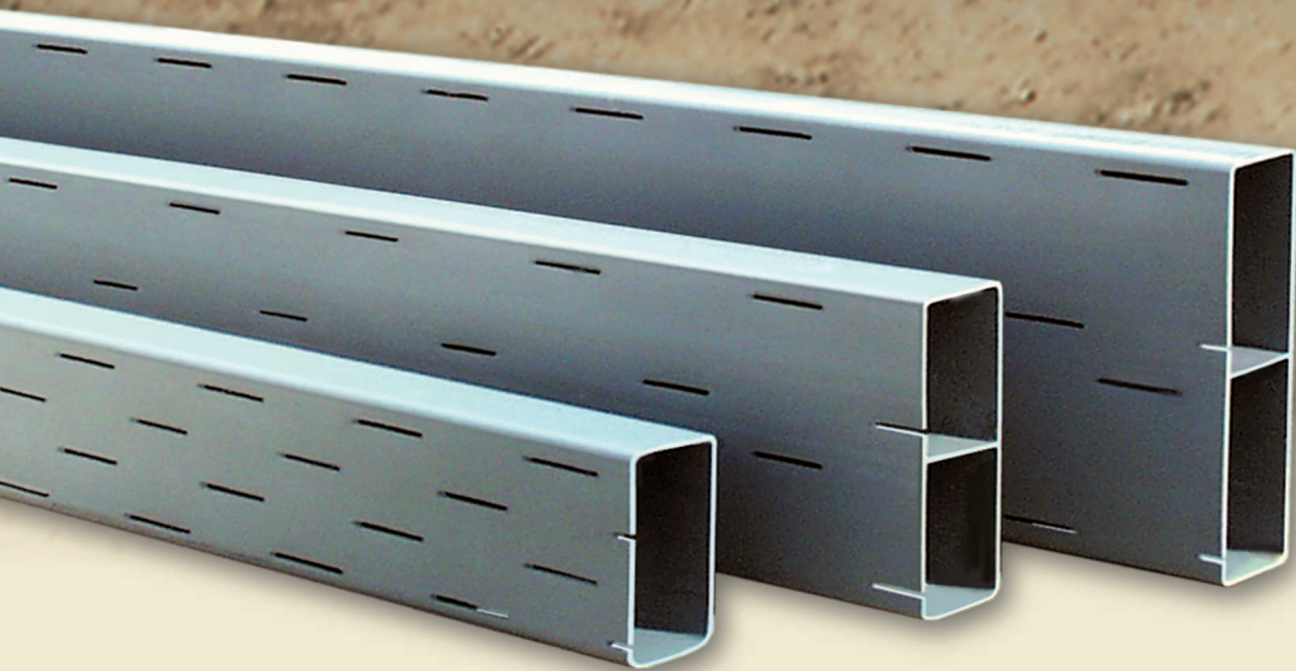


FORM-A-DRAIN

IT'S ABOUT TIME
YOUR TIME



CertainTeed 
Quality made certain. Satisfaction guaranteed.

FEATURES AND **BENEFITS**

BUILDERS AND CONTRACTORS ALIKE NOW HAVE A REVOLUTIONARY WAY TO DESIGN A SUPERIOR FOUNDATION SYSTEM INTO THEIR HOMES

FEATURES	BUILDER BENEFITS	FEATURES	CONTRACTOR BENEFITS
Ideally located drainage system, parallel to footing, below foundation wall	Relieves hydrostatic pressure on walls and slabs, reducing risk of cracking	Stay-in-place lineal footing form system	Eliminates wood or metal form cost, and form removal, cleaning, and transportation costs
Drainage system cannot sag or crimp	Reduces risk of blockage or uneven drainage	Less elapsed time between footing pour and wall construction	Increases productivity
Greater water intake capacity than traditional drain pipe; 50% more water inlet area than minimum ASTM standards	Ensures rapid collection of ground water and minimizes possibility of water infiltration	Immediate drainage capability	Can minimize down time in inclement weather
Level installation easier to set wallforms and masonry block	Uniform drainage of foundation,	Simple adaptation with a round pipe "T" and vertical PVC pipe stack provides radon reduction	Eliminates material and labor costs for separate radon reduction system; sub-slab perimeter system already in place
Smooth interior surface and less chance of build-up and clogging	Allows for free flow of water	Eliminates need for conventional corrugated poly drain tile	Reduces material and labor associated with drain tile installation
Drainage is provided for both the inside and outside of foundation footing	Better protection against water infiltration; reduces risk of cracking and leaking	Complete line of lineals, couplings, 90° and 45° corners, vertical T's & L's, outlets, and accessory items	Can accommodate virtually any foundation layout
Strong, rigid PVC construction; greater stiffness	Minimizes possibility of system failure due to a collapsed or crushed drainage system	No oiling of forms required	Reduced oil cost and elimination of oil handling and disposal
Conforms with EPA's "Model Standards & Techniques for Radon Control in New Residential Buildings" and ASTM E 1465-92 Standard Guide for Radon Control Options. Form-A-Drain is the subject of ICC Report Number 95-37.01.	Acceptance by local code officials and inspectors	Lightweight lineals: 4" = 7 lbs, 6" = 10 lbs, 8" = 14 lbs	Reduced job site labor, lower risk of injury, reduced fatigue
		Simple leveling method	Labor savings during form set-up/installation
		Job site assembly without the use of solvent cement or mechanical fasteners	Similar set-up time to wood, may reduce overall form set-up time
		Easy to cut with hand or power saw	No additional or special tools required for cutting; fast installation
		Spacer straps available in pre-determined width dimensions	Improved set-up time by reducing time used for measuring, possible rebar chair

